

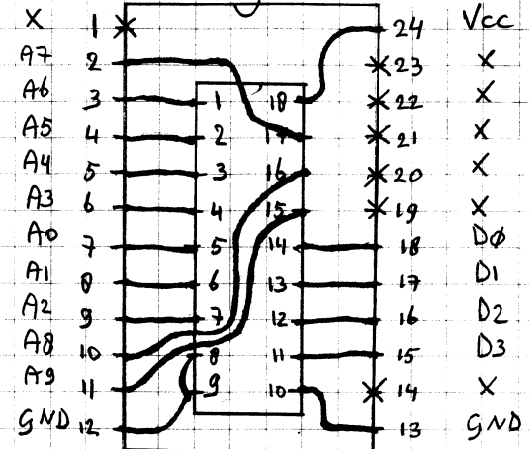
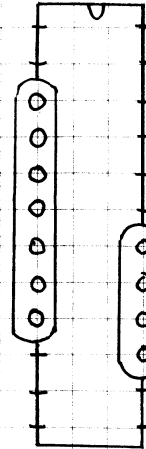
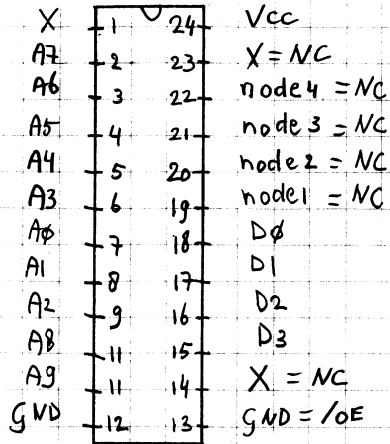
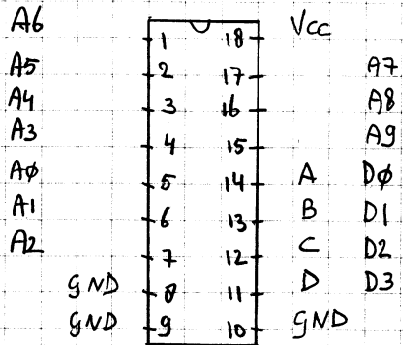
μPB 426D



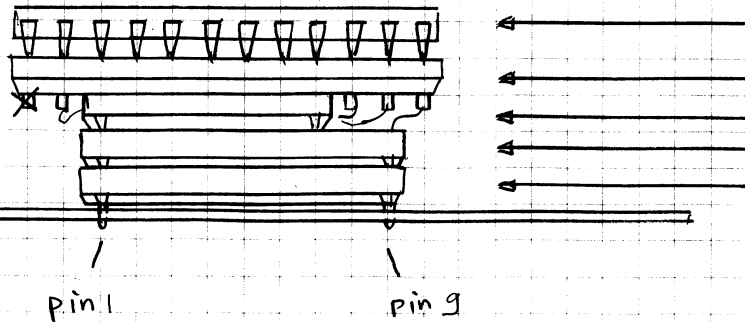
programmed
GAL22V10

interconnections
with
socket parts

interconnections
with
wire



Socket = green
wire = red



GAL chip

GAL socket with removed holes for X = NC
interconnect socket + wires
removable / plugin socket
soldered socket on board
(= original μPB 426 position)

Modification / repair defective μPB 426 chip on NRD-515 synth board
Design PEI ABR — W. Geeraert 8-2004