

**BLILEY TECHNOLOGIES INC.**2545 West Grandview Blvd.  
Erie, PA 16506Phone: (814) 838-3571  
FAX: (814) 833-2712Web: www.bliley.com  
E-Mail: info@bliley.com

This is our interpretation of your specification. If this does not meet your requirements in any way, please contact us as soon as possible.

**BLILEY P/N: NVG47A1282**

Customer Approval: \_\_\_\_\_ Date: \_\_\_\_\_

**RoHS compliant product.**

Type: OCVCXO

Frequency: 10.0 MHz

Output:

- a. Type Sinewave
- b. Level +7 dBm Min  $\pm 1$  dB  
( Over -30°C to +70°C and  $V_s = +5.0 \pm 3\%$  )
- c. Load 50 Ohms
- d. Harmonics/Subs -30 dBc Max
- e. Spurious -80 dBc Max

Frequency Stability:

- a. Temperature  $\pm 0.005$  ppm over -5°C to +50°C  
 $\pm 0.020$  ppm over -30°C to +70°C
- b. Aging  $\pm 1.0$  ppb/day  
 $\pm 0.3$  ppm/year
- c. Supply  $\pm 1.0$  ppb for a 1% change

Electrical Frequency Adjust:

- a. Range  $\pm 0.5$  ppm Min to  $\pm 1.1$  ppm Max
- b. Sensitivity 2.5 Hz/V Min to 5.5 Hz/V Max
- c. Voltage +0.0 Vdc to +4.0 Vdc
- d. Slope Positive
- e. Input Impedance 10 Kohms to 100 Kohms

Date	Rev.	Revised per	Initials

	Initials	Date
Mechanical Eng:	JPG	3-21-06
Design Eng:	PR	3-21-06
Quality:	DPM	3-28-06
Release Date: <b>3-21-06</b>		
Specification No.	Revision	Sheet #
<b>6891</b>		<b>1 of 3</b>

**UNCONTROLLED -- ISSUED March 28, 2006**

**Users of this document are responsible for ensuring that they are using the correct revision level.**  
**PROPRIETARY INFORMATION -- Disclosure or duplication of this material, in whole or in part, is prohibited except as authorized in writing by Bliley Technologies Inc.**

Start-Up: 10 MHz output level within 0.5 seconds  
over -30°C to +70°C

Short Term Stability:  $\leq 1 \times 10^{-10}$  for 0.1 sec to 1 sec

Phase Noise:  
-120 dBc/Hz at 10 Hz  
-130 dBc/Hz at 100 Hz  
-140 dBc/Hz at 1 KHz  
-145 dBc/Hz at 10 KHz  
-145 dBc/Hz at 100 KHz

Warm-Up:  
( Ref. to 30 Minutes on time )  
Within  $\pm 1.0$  ppm in 2 Minutes  
Within  $\pm 0.1$  ppm in 2.5 Minutes  
Within  $\pm 0.03$  ppm in 5 Minutes  
Within  $\pm 0.01$  ppm in 15 Minutes

Supply: +5.0 Vdc  $\pm 5\%$   
5 Watts Max at Warm-Up  
2 Watts Max Steady state at +25°C

Vref: +4.0 Vdc  $\pm 0.2$  Vdc at 1 mA Max

Operating Temperature Range:  
a. Normal -5°C to +50°C  
b. Extended -30°C to +70°C

Storage Temperature Range: -55°C to +85°C

Package: See Outline Drawing

Specification No.	Revision	Sheet #
6891		2 of 3

UNCONTROLLED -- ISSUED March 28, 2006

Users of this document are responsible for ensuring that they are using the correct revision level.  
**PROPRIETARY INFORMATION** -- Disclosure or duplication of this material, in whole or in part, is prohibited except as  
authorized in writing by Bliley Technologies Inc.

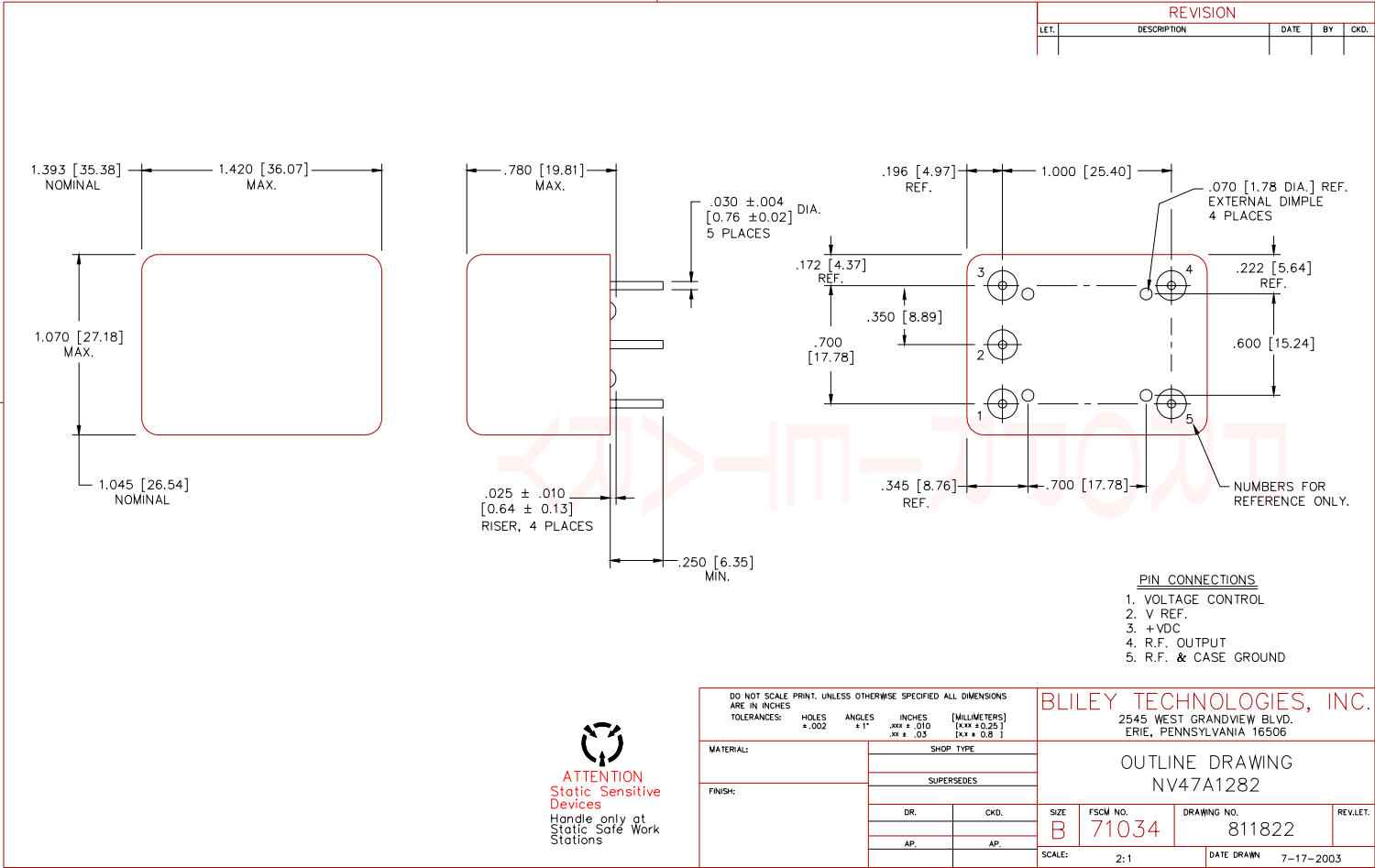
UNCONTROLLED -- ISSUED March 28, 2006

Users of this document are responsible for ensuring that they are using the correct revision level.

PROPRIETARY INFORMATION -- Disclosure or duplication of this material, in whole or in part, is prohibited except as authorized in writing by Bliley Technologies Inc.

NOT TO SCALE

Specification No.	Revision	Sheet #
6891		3 of 3



ATTENTION  
Static Sensitive  
Devices  
Handle only at  
Static Safe Work  
Stations