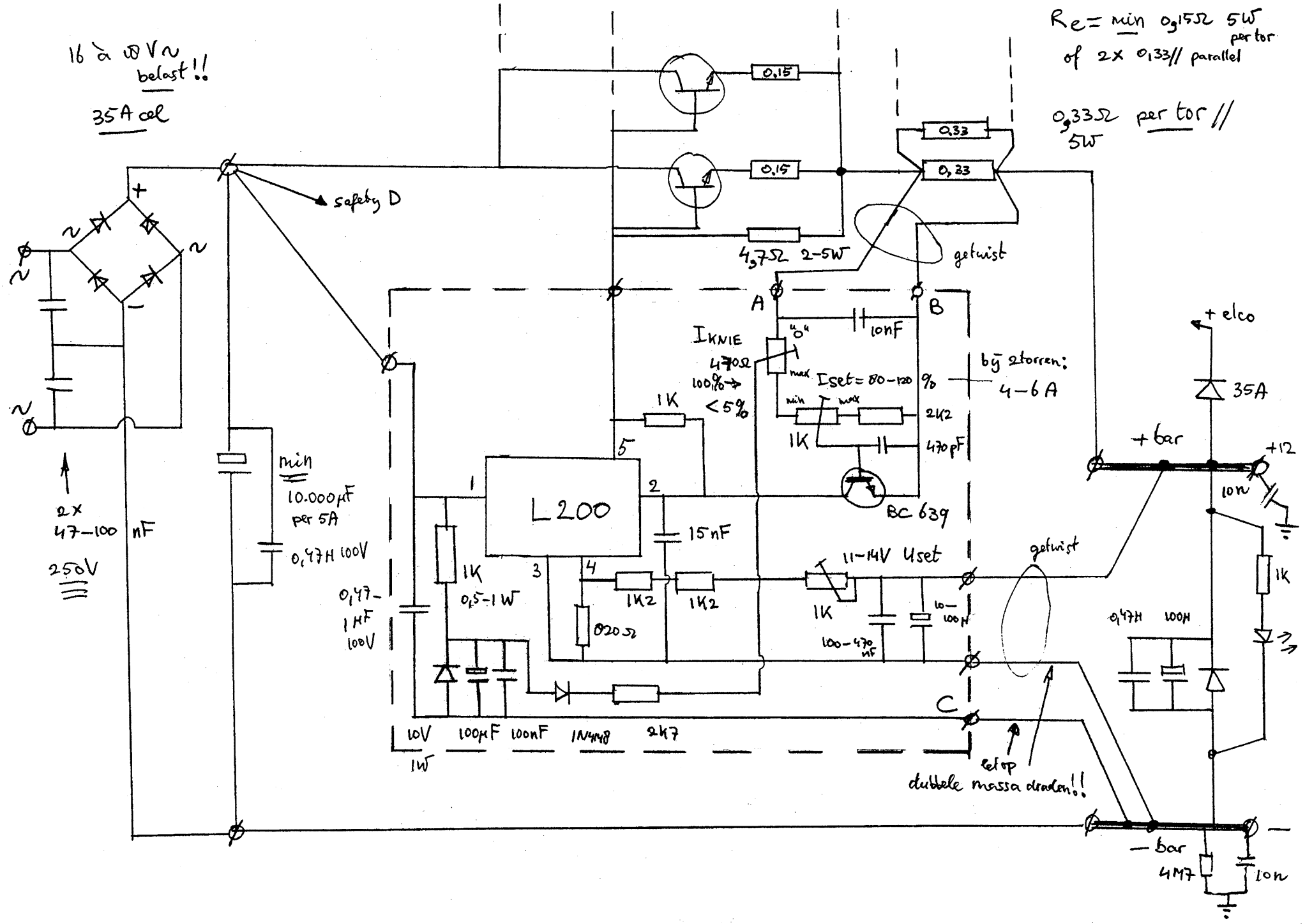


16 à 18 Vn belast!!
35A cel

$R_e = \min 0,15 \Omega$ 5W per tor
of 2x 0,33// parallel
0,33 Ω per tor // 5W



safety D

getwist

bij storten:
4-6 A

getwist

dubbele massa draden!!
elco

2x 47-100 nF
250V

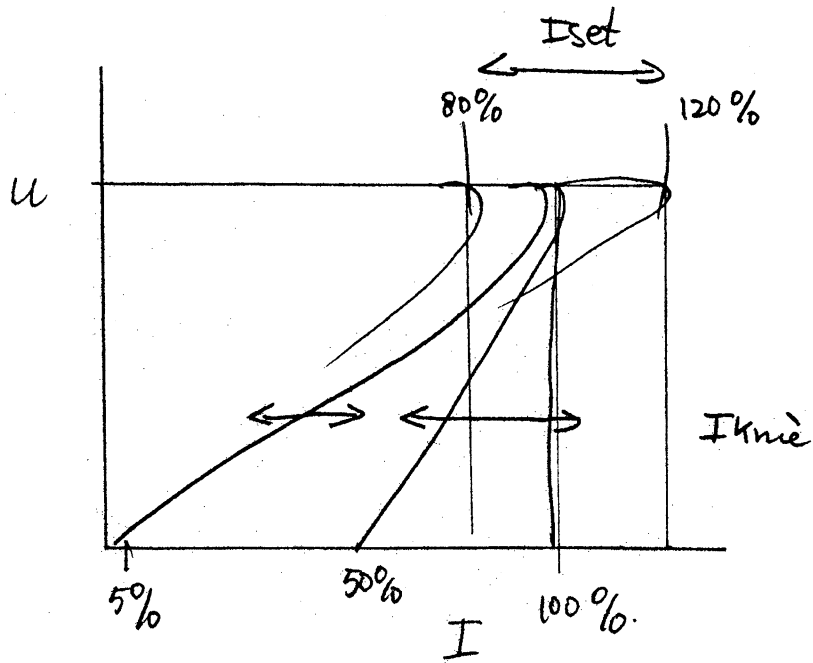
min 10.000pF per 5A
0,47H 100V
0,47-1H 100V

10V 100pF 100nF 1N4148 2k7 1W

BC 639
I_{KNIE} 470Ω
100% →
< 5%
I_{set} = 80-120 %
10nF
1K
2k2
470pF
1K

0,47H 100H

4M7 10n



dissipatiebegrenzing door fold-back stroom limit

