

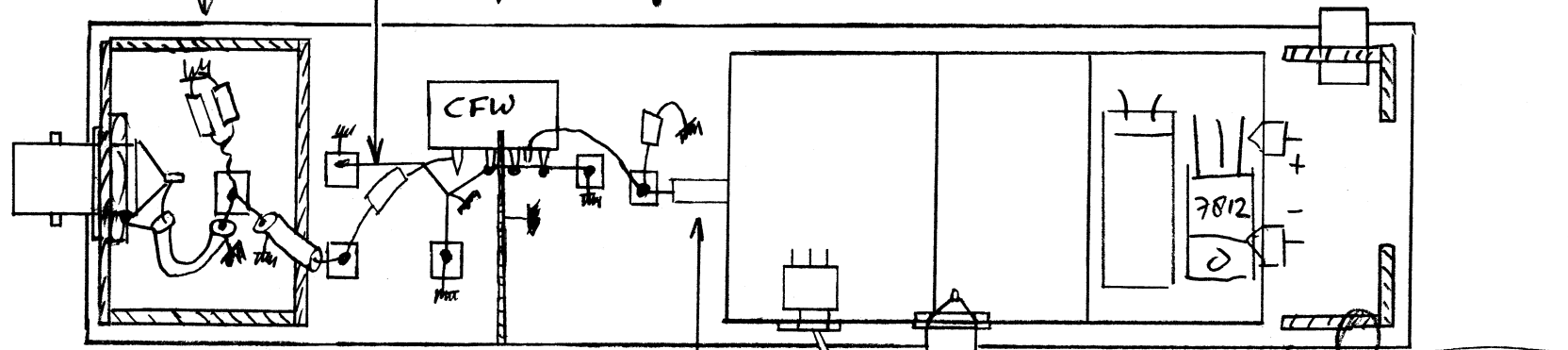
50  $\Omega$  (2x 100 // ) in  
screened section

some raised earth  
wires 0.5 mm

filter under test ← here a PCB-clad  
cover tray

adapter DC

$R_{out}$



short  
piece of  
thin coax

$R_{in}$

x100

x10

SMB connector  
with short thin coax

pin with teflon  
(inner solid coaxwire)

screened section

additional shielding  
barrier