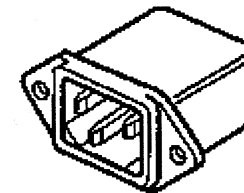


Capacitors marked X are unsafe to nowadays CE standards.

Also: mains pollution can enter the receiver and synth HF can radiate on VHF!.

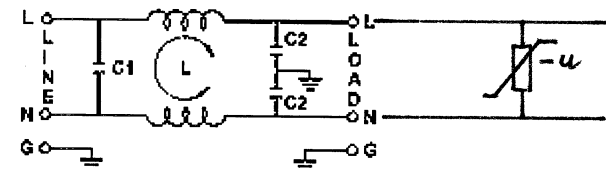
Replacing those capacitors with a standard screened mains filter integrated in the IEC mains connector is the best solution. You have to do some filing to enlarge the mounting hole. Remove the synth board before you do that! Adding a VDR encapsulated in a shrink tube to protect the transformer from voltage spikes is also a good idea. Place this VDR NOT near the synth board, but near the voltage selector. Choose the most compact 1 Amp mains filter type from Schaffner or Qualtek.



Preferably with solder lugs, they can be bend up and down to clear some space near the synth board. Also use a plastic shield plate between mains connections and synth board and case. There is very little space left. Put extra shrink tube over the HOT mains lugs. Adding anti mains-rattle C's over the rectifier bridges makes it EMC complete. See another drawing in this set.

Filter types: Schaffner FN321-1/01 or FN323-1/01 (if still available)
 FNxxx-1 is 1 Amp version, /01 is also with solder lugs
 Qualtek 857-01/005 (shorten fast-on lugs)

VDR type: Siemens-Matsushita SIOV S20K275
 SIOV S20K250
 SIOV S20K230
 SIOV S10K275



First type is the best choice

