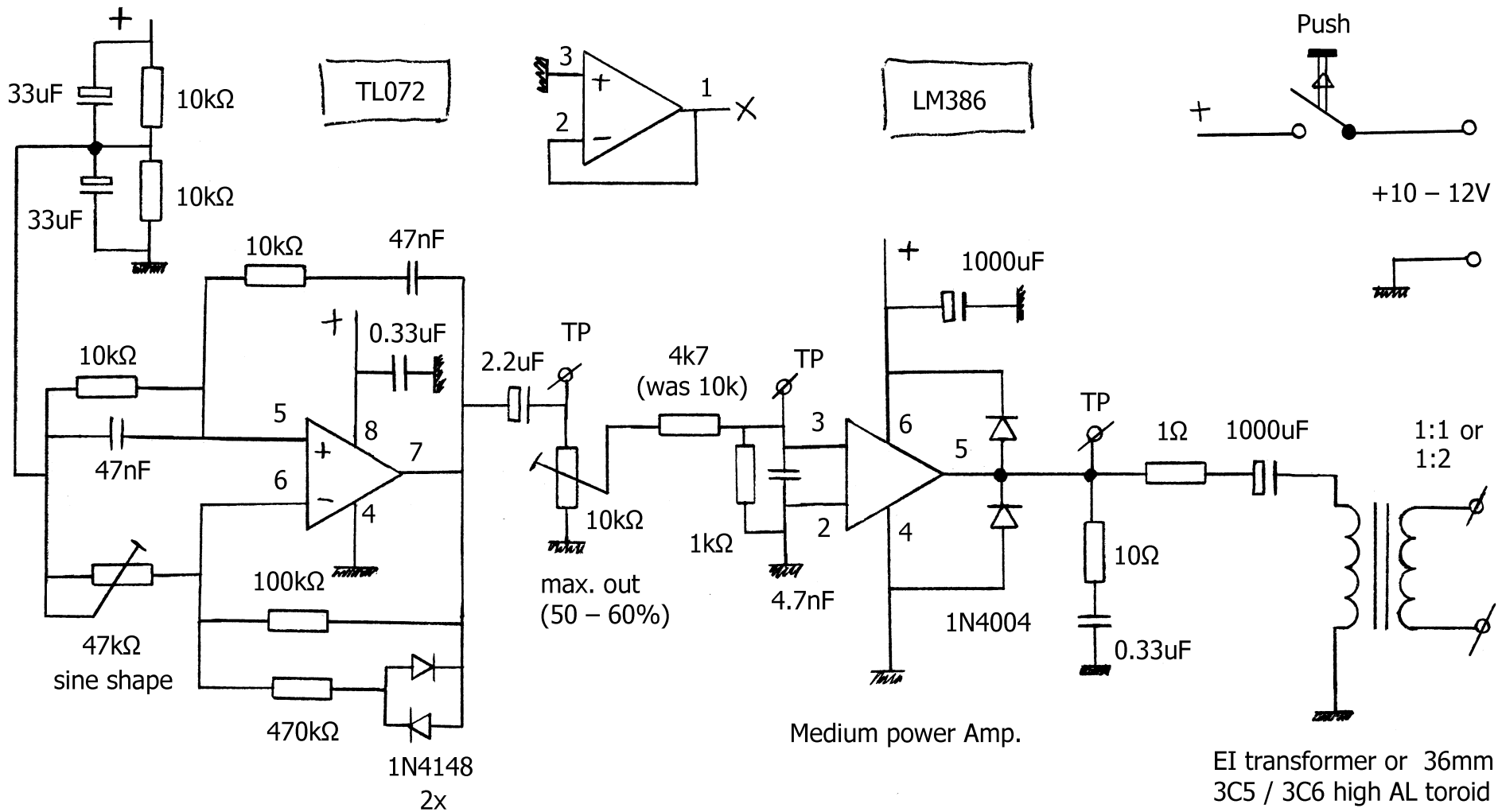


Bridge Circuit
Earth Resistance Meter
© PE1ABR - 1993



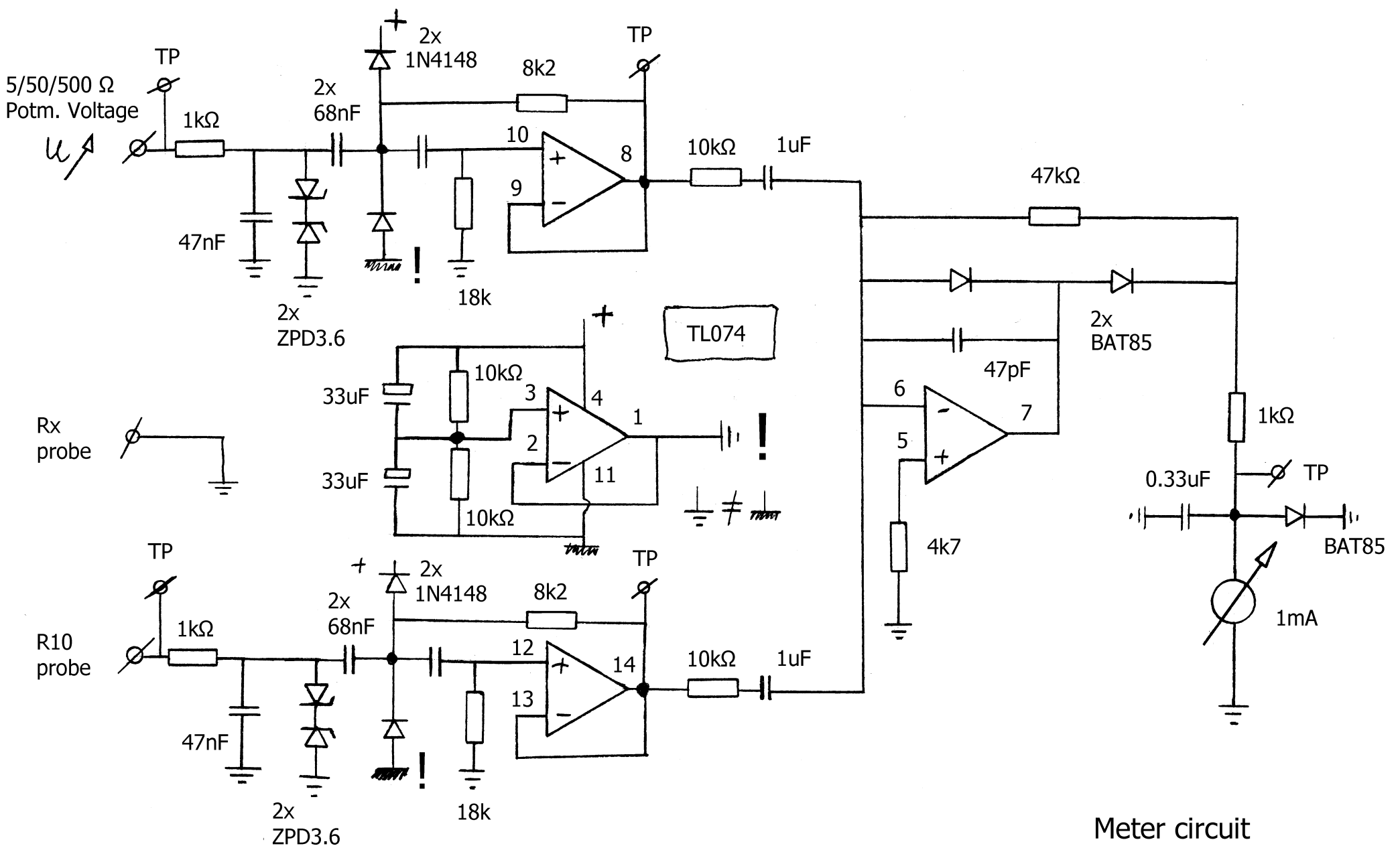
Wien bridge sine osc.

Medium power Amp.

EI transformer or 36mm
 3C5 / 3C6 high AL toroid
 AL >= 10000
 Zmin = 100 – 200 Ohm
 1:1 or 1:2

Enclosure = TEKO P/4
 215x130x77 mm
 Conrad 523941

Signal generation
 Earth Resistance Meter
 © PE1ABR – 1993



5/50/500 Ω
Potm. Voltage

μ

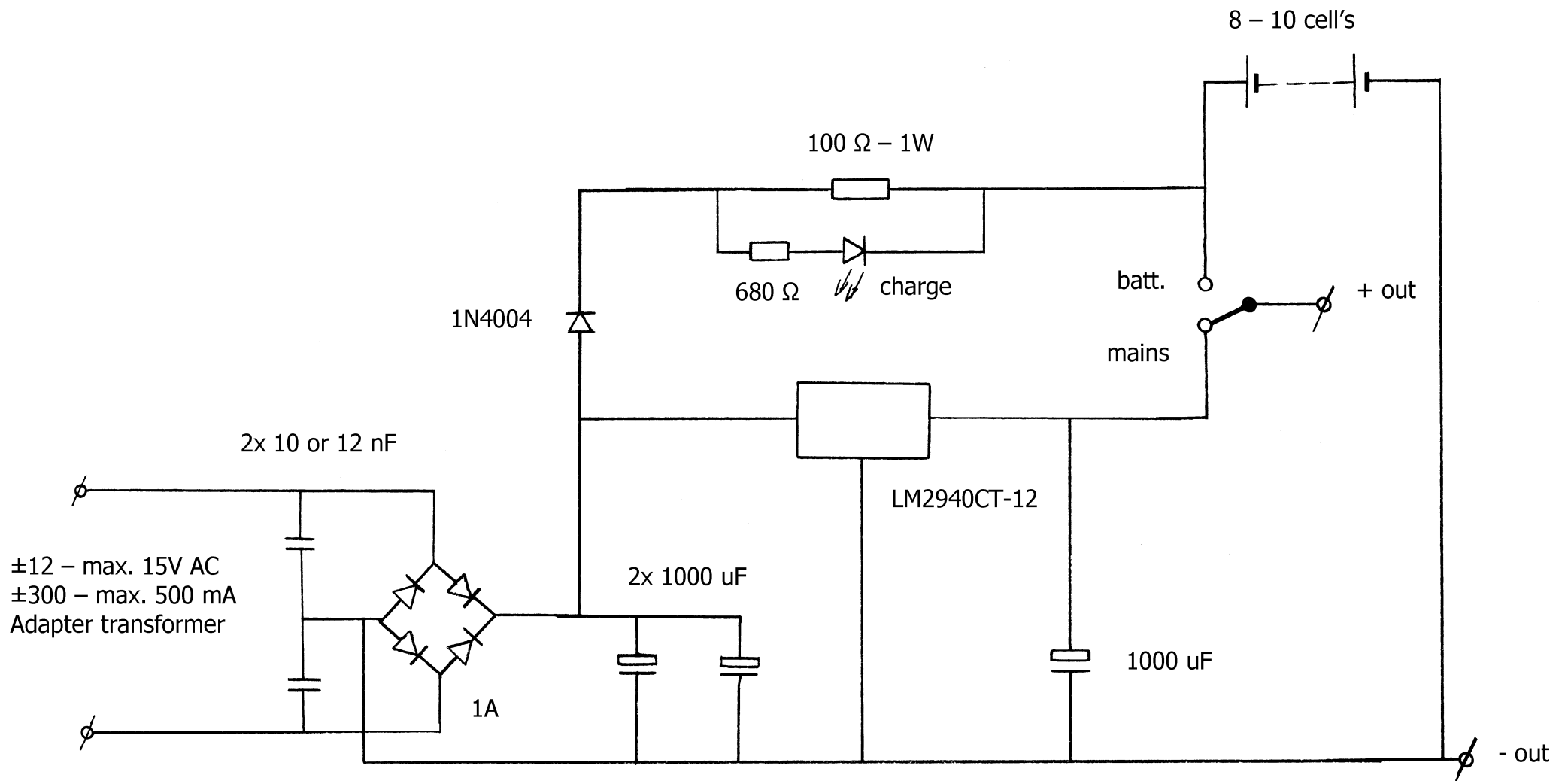
Rx probe

R10 probe

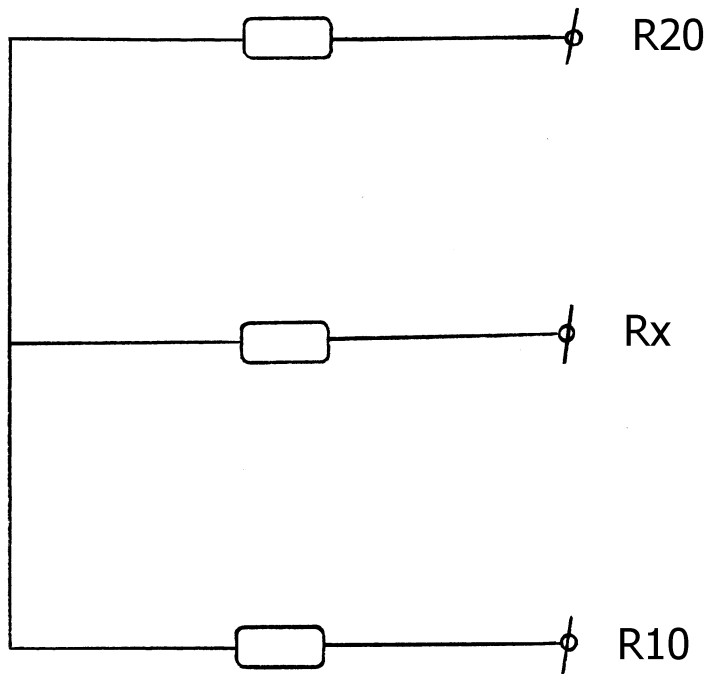
low pass
±5 – 10 kHz

high pass
±265 – 300 Hz

Meter circuit
Earth Resistance Meter
© PE1ABR – 1993



Power supply and charger
 Earth Resistance Meter



Test with minimum mA indication

$R20 / R10 =$ Any value between 10 and 100 ohms

$R_x =$ Test with 1, 2.2, 4.7, 10, 22, 47, 100, 220, 330 Ohms

Different R20/R10 values should have NO effect on measured Rx value.

Only the maximum indication will vary.

© PE1ABR - 1993

Test unit for performance check
Earth Resistance Meter